






VCR PROJETOS CONSTRUÇÕES E INCORPORAÇÕES LTDA (VCR Ltda- Brazil)   
Av. Paulista, 1471 – Conj. 511, sala 02, Bela Vista, São Paulo, SP-Brasil.  
ZIP 013311-927, Post Office Box 21321

VCR CONSTRUCCIONES Y COMERCIO S.L. (VCR Ltda- Spain)   
Paseo de la Castellana 200, Madrid-Spain, ZIP 28046

SOLOFIRME LDA (VCR Ltda- Portugal)   
Av. Infante Dom Henrique, N°2, de Elvas-Portugal. Zip 7350-100

#### CONTACTS:

+55(11) 994134475   
+34 674638706   
+351 93 937 4259   
<https://vcrconstrucoes.com>  
[info@vcrconstrucoes.com](mailto:info@vcrconstrucoes.com)  
Eng. Victor C. Rojas  
CEO of VCR GROUP

September 05, 2025

## **SOFT CORPORATE OFFER & PROCEDURE**

Valid untill September, 2025

To:

Att: Mr.

- CEO

We at **VCR Construcciones y Comercio S.L.(VCR Spain)** as a Company of **VCR GROUP**, hereby issue this Full Corporate Offer with full responsibility, we confirm and certify that we have the intention and capacity to supply the quantity of **1,200,000 tons of Second Quality Railway**. according to the non-negotiable terms and conditions herein stipulated..

**Description: RAILWAY SECOND QUALITY – LIGHT WEIGHT RAILS**

Railway second quality, lightweight railroad rails, steel rails HMS2.

Railway rails are made of high-quality steel, designed to withstand high stresses. Over time, advancements in materials such as steel have improved the durability of rails, minimizing issues that could lead to derailments or rail breakage.

#### **Product Description & Terms of Delivery:**

- Commodity: Railway HMS2 Iron & HMS2 Commodity
- Total Quantity: 1,200,000 metric tons or more
- Origin: Saudi Arabia
- Product: Rail HMS2 R50/R65 – See attached technical specifications “HMS-2, RAILS R50, R65.”
- Size: As per buyer request (1–12 meters).
- Delivery per Month: Minimum 100,000 MT shipment monthly as per the buyer's conditions within the letter of credit terms.
- Packing: Break bulk or container.
- Destination Ports: Asia, Middle East, Africa, Europe, and America.
- Inspection: Conducted by SGS or other reputed agencies, seller's expense at loading ports.
- Discharge Port Inspection: Conducted at buyer's expense by SGS or Other reputed agencies.
- Terms of Delivery/Price: CIF for all Asian, Middle Eastern, European, and American ports.  
310 USD PER MT - CIF To any Port of the world. Price subject to negotiation.  
(The price includes insurance, shipping, added tax, and bank administrative fees)

#### **CONTRACT GUARANTEE:**

\* **Unconditional Cash-Backed SBLC (Standby Letter of Credit) via Swift MT 760**, which must be transferable, divisible, confirmable, assignable, irrevocable, and 100% operational, for the value of (2) two monthly installments or USD 62,000,000.00, issued from a top 25 bank worldwide and valid for (1) one year and (1) one day. Each installment must be paid via MT 103 Cash Transfer against the Bank Balance and other shipping documents at the port of origin. (See Template). We can accept **Escrow Account** for a Trial Order.

#### **THE DEALING PROCEDURES ARE SUMMARIZED IN THREE STEPS:**

Step 1:

##### **Financial Capability:**

- The bank's RWA letter explicitly confirms readiness to issue a Unconditional Cash-Backed SBLC (Standby Letter of Credit) via Swift MT 760 in favor of **VCR CONSTRUCCIONES Y COMERCIO S.L.** or its **PAYER/TRUSTEE/ATTORNEY**. (See bank details at the end.)

---


**VCR GROUP**


Brazil – Portugal - Spain


[info@vcrconstrucoes.com](mailto:info@vcrconstrucoes.com) / [victor.ceo@vcrconstrucoes.com](mailto:victor.ceo@vcrconstrucoes.com)

Page 1 de 10



**VCR PROJETOS CONSTRUÇÕES E INCORPORAÇÕES LTDA (VCR Ltda- Brazil)**   
Av. Paulista, 1471 – Conj. 511, sala 02, Bela Vista, São Paulo, SP-Brasil.  
ZIP 013311-927, Post Office Box 21321

**VCR CONSTRUCCIONES Y COMERCIO S.L. (VCR Ltda- Spain)**   
Paseo de la Castellana 200, Madrid-Spain, ZIP 28046

**SOLOFIRME LDA (VCR Ltda- Portugal)**   
Av. Infante Dom Henrique, N°2, de Elvas-Portugal. Zip 7350-100

#### CONTACTS:

+55(11) 994134475   
+34 674638706   
+351 93 937 4259   
<https://vcrconstrucoes.com>  
[info@vcrconstrucoes.com](mailto:info@vcrconstrucoes.com)  
Eng. Victor C. Rojas  
CEO of VCR GROUP

- Full bank officer contact details for verification (name, title, phone, email).
- ATV + A SETUP CALL WITH YOUR BANK OFFICER.

#### **Instrument Details:**

Draft SBLC verbiage (MT760 format) accepted by email from your bank officer:

- a) Issuing bank name and SWIFT
- b) Beneficiary details
- c) Tenor and amount
- d) Confirmation status
- e) Non-transferable, irrevocable structure

#### **Invoice & Contract:**

- Seller will issue a proforma invoice for one shipment and signing a contract for one shipment as well, this invoice will be updated for every shipment. The invoice will be valid only for 21 days.
- The buyer will issue a confirmed letter of credit MT760 for 1 year and 1 day with full amount (confirmed, not delay, non-transferable and irrevocable) as per the proforma invoice's terms and conditions by the buyer.

#### **Visits & Inspection rights:**

In case of requesting any documents, inspection certificate, etc., property rights, inspection of the goods, requesting a visit or video, the buyer can claim them by:

- Sending **Pre - Advise MT705** Received, accepted by the advising Bank and Officially Advised to us.
- Or, among the conditions of the Unconditional Cash-Backed SBLC (Standby Letter of Credit) via Swift MT 760 sent by a bank from an official e-mail to an accredited bank, with the full value of the proforma invoice and its conditions.

Seller is committed to issue performance bond for 2% of the letter of credit value as a penalty on seller in case of no execution or delay or non-conformity with the specifications, after the Unconditional Cash-Backed SBLC (Standby Letter of Credit) via Swift MT 760 at sight received, accepted by advising bank and officially advised to us.

Att.

If this offer is accepted by the buyer,  
sign and stamp the company here

\_\_\_\_\_  
Signature and stamp

**VCR CONSTRUCCIONES Y COMERCIO S.L.**

**Eng. Víctor Antonio Carvajal Rojas –**

**CEO of All the Companies of VCR GROUP**

Passport N° AR893143 of **Colombia**

RNE N° V-928295-0 of **Brazil**

NIF N°: 328.041.637 of **Portugal**

NIE N°: Z0248637-N of **Spain**

\_\_\_\_\_  
Signature and stamp

Mr.

- CEO

**VCR GROUP**

Brazil – Portugal - Spain

[info@vcrconstrucoes.com](mailto:info@vcrconstrucoes.com) / [victor.ceo@vcrconstrucoes.com](mailto:victor.ceo@vcrconstrucoes.com)

## BANK COORDINATES of VCR CONSTRUCCIONES Y COMERCIO S.L.

**pay into this account via Mt 103 cash transfer each delivery**  **Santander**  
**And receipt of Bank Guarantee as SBLC Unconditional Cash Backed**

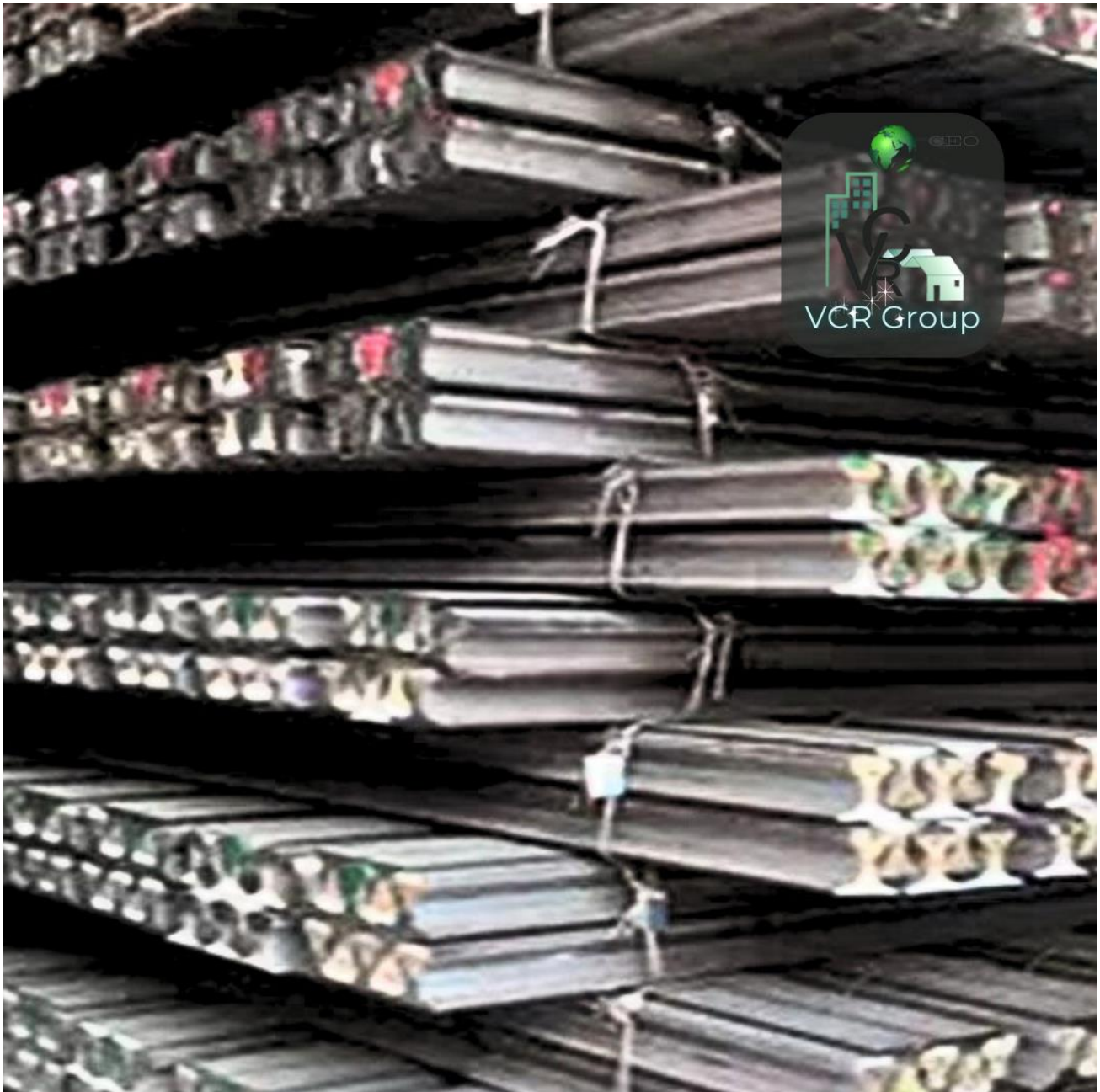
Beneficiary:	VCR CONSTRUCCIONES Y COMERCIO S.L.
Beneficiary Address:	Paseo de la Castellana, 200, Madrid-Spain, ZIP 28046
NIF N°:	B75715623
Phones N°:	+34 674638706 / +55 11 994134475 / +351 93 937 4259
Bank name:	<a href="#">SANTANDER BANK</a>
Bank address:	Bravo Murillo, 331. Madrid-Spain
ZIP CODE N°:	28020
Agency N°:	2661
Swift Iban N°:	ES45 0049 2661 4225 1447 2284
Swift Code N°:	BSCHESMM
Bank Officer(s):	Francisco Javier Rivas Jiménez
email officer 1:	<a href="mailto:franciscojavier.rivasjimenez@gruposantander.es">franciscojavier.rivasjimenez@gruposantander.es</a>
phone officer N°:	+34 658818194

## BANK COORDINATES PAYMASTER of VCR CONSTRUCCIONES Y COMERCIO S.L.

**pay into this account via Mt 103 cash transfer each delivery**  **CaixaBank**  
**And receipt of Bank Guarantee as SBLC Unconditional Cash Backed**


Beneficiary:	VCR CONSTRUCCIONES Y COMERCIO S.L.
Beneficiary Address:	Paseo de la Castellana, 200, Madrid-Spain, ZIP 28046
NIF N°:	B75715623
Phones N°:	+34 674638706 / +55 11 994134475 / +351 93 937 4259
Bank name:	<a href="#">CAIXABANK</a>
Bank address:	Alberto Alcocer 1-3
ZIP CODE N°:	28036 Madrid-spain
Agency N°:	Oficina 9055
Swift Iban N°:	ES35 2100 9055 1602 0049 7918
Swift Code N°:	CAIXESBXXX
Bank Officer(s):	FRANCISCO ALFONSO GONZÁLES HERRERA
email officer 1:	<a href="mailto:franciscoalfonso.gonzalez@caixabank.com.es">franciscoalfonso.gonzalez@caixabank.com.es</a>
phone officer N°:	+34 686 731 740

***They are new second grade rails never used  
We cut them 1.5 meter to sell as Second grade  
Second grade rails can't use for building rails for trains  
No rust no damage, Laser cut***







Product	Description	Applications
<b>REBAR STEEL</b> 	Reinforcing steel bars or mesh used as tension devices in reinforced concrete and masonry structures to strengthen and hold the concrete in compression..	Construction industry for reinforcing concrete structures.

### Mechanical Properties of SABIC Steel Rebars

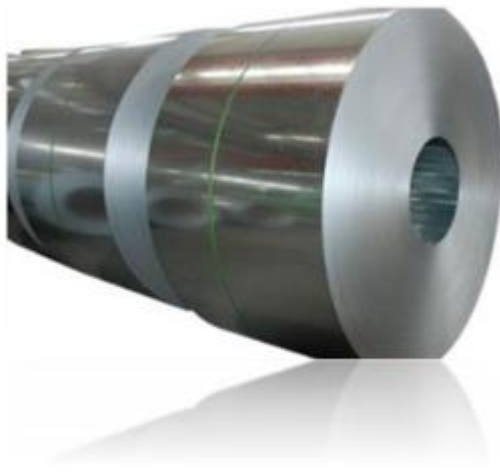
Standard Diameter (mm)	Grade	Nominal Strength (MPa) (min.)	Yield Strength (MPa) (min.)	Tensile to Yield Ratio (min.)	Tensile in 200 mm (min.)	Elongation (A5) (min.)	Elongation (min.)	Agt (%)
SASO ASTM A615M	280(40)	280	420	N/A	N/A	12	N/A	N/A
	420(60)	420	620	N/A	N/A	9, 8, 7	N/A	N/A
	520(75)	520	690	N/A	N/A	7, 6	N/A	N/A
SASO ASTM A706M	420(60)	420	550	1.25	N/A	14, 12, 10	N/A	N/A
BS 449	460B	480	N/A	1.08	N/A	14	5	
	B500B	500	N/A	1.08	N/A	N/A	N/A	5
GCC Standard GSO/ISO	B400BR/B400BWR	400	N/A	1.08	N/A	14	5	
	B500BR/B500BWR	500	N/A	1.08	N/A	14	5	

### Chemical Composition of SABIC Steel Rebars

Standard	Grade	Chemical Composition % (Maximum)
		C
SASO ASTM A615	280/420/520	0.3
	(40/60/75)	
SASO ASTM A706M	420(60)	0.3
BS 449	460(B)	0.25
	B500B	0.22
GCC Standard	B400BR/B500BR	0.22
ISO 6935-2	B500BWR	

<b>CIF ASWP prices for quantities          from 100,000 tons/month          of SABIC Steel Rebars</b>	<b>613 Usd/ton</b> <i>These prices may change at any time, please update us.</i>
---	---

### Hot Rolled Steel Sheets



Steel sheets rolled at high temperatures (above 1700°F), resulting in products with excellent flatness, brightness, straightness, chemical composition, and mechanical properties.

Manufacturing processes requiring high-quality steel sheets.

### GR-60 Hot Drawn Description

Measures and compositions can be adjusted to buyers' requests based on the use of the end product.

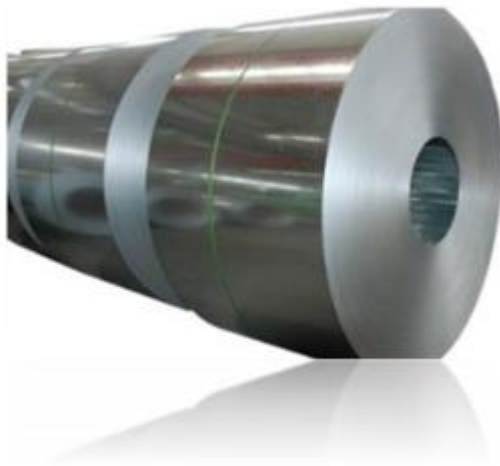
Material	CGCC, DX51D, Q195, Q235	Zinc Coating	20-120 g/m <sup>2</sup>
Grade	SGCC, DX51D+Z	Thickness	0.14-1.0 mm
Zinc Coating	20-120 g/m <sup>2</sup>	Width	600-1250 mm
Thickness	0.13-0.8 mm	Length	Custom
Width	600-1250 mm	Thickness Tolerance	+ / - 0.001
Coil ID	508/610 mm	Width Tolerance	+ / - 0.006
Coil Weight	3-8 tons	Length Tolerance	+ / - 0.06
Surface Structure	Mini/Big Spangle	Surface Structure	Mini/Big Spangle
Surface Treatment	Anti-Finger printing, Chromated, oiled/non-oiled	Surface Treatment	Anti-Finger printing, Chromated, oiled/non-oiled
Package	Standard export package (Detailed picture is as follows)	Package	Standard export package (Detailed picture is as follows)
Hardness	Soft (normal), hard, full hard (G300 – G550)	Finish	Galvanized
Country of Origin	Saudi Arabia	Country of Origin	Saudi Arabia

**CIF ASWP prices for quantities  
 from 300,000 tons/month  
 of Hot-Rolled Coil**

**738 Usd/ton**

*These prices may change at any time, please update us*

### Galvanized Steel Sheets and Coils



Various types of galvanized steel sheets and coils, each with specific benefits and uses, supplied in any required amount.

Exterior building products, ductwork, HVAC products, flashing, electrical boxes, roofing, doors, sashes.

There are many types of galvanized coils and sheet steel in the market, each type offering its own benefits and unique uses.

Our Steel division at HPME provides you with any type you need in your market. We can also supply any amount of galvanized steel and coil.

Below are the main types of galvanized coil and sheet steel:

- Commercial Steel (CS Types A, B, and C)
- Forming Steel (FS Types A and B)
- Deep Drawing Steel (DDS Types A and C)
- Extra Deep Drawing Steel (EDDS)
- Structural Steel (SS) – further designated by Grades (33, 37, 40, 50, 80)
- High Strength Low Alloy Steel (HSLAS)

The quality of galvanized steel depends on the zinc element used in its production.


**CIF ASWP prices for quantities  
 from 300,000 tons/month  
 of Galvanized Steel-Rolled Coil**

**863 Usd/ton**

*These prices may change at any time, please update us*





<p><b>Cold Rolled Steel Sheets</b></p> 	<p>High-quality cold-rolled steel sheets with excellent flatness, brightness, straightness, chemical composition, and mechanical properties.</p>	<p>Applications requiring precise dimensions and superior surface finish, such as automotive panels and appliances.</p>
<p>HPME offers high-quality cold-rolled steel sheets that meet global standards for flatness, brightness, chemical composition, and mechanical properties.</p> <p>Our manufacturing division supports all types of cold-rolled steel sheets to meet customer requirements globally.</p>		
<p>Specifications of Cold-Rolled Steel Sheets:</p> <ul style="list-style-type: none"> <li>• Grades:           <ul style="list-style-type: none"> <li>- Ordinary carbon steel: Q195, Q235 SPCC, SPCC, SPCE, DC01–06, St12, etc.</li> <li>- Improved carbon structural steel: 10F, 20#, 45#, 50#, 65#, 75#, 5Mn, 50CrVA, 60Si2Mn, 62Si2Mn, Sup6, SK5, SK7, T8, T10, GCr15, etc.</li> </ul> </li> <li>• Thickness: 0.10 mm – 3.00 mm</li> <li>• Width: 10 mm and above</li> <li>• Coil ID: 250 mm/400 mm/508 mm or as per customer's request</li> </ul>		
<p>HPME is a trusted supplier for steel, iron products, and derivatives in today's market. With a robust financial, infrastructure, and logistical capacity, HPME provides top-notch products at competitive prices.</p>		
<p><b>CIF ASWP prices for quantities            from 300,000 tons/month            of Cold-Rolled Coil</b></p>	<p><b>728 Usd/ton</b>  <i>These prices may change at any time, please update us</i></p>	