



BRAZIL - PORTUGAL - SPAIN

VCR Group

**VCR COMERCIO Y
CONSTRUCCIONES S.L.**



FROZEN CHICKEN

CATALOGUE PRODUCTS

Premium frozen chicken products from Brazil,
prepared for international markets



VCR COMERCIO Y CONSTRUCCIONES S.L.

INTRODUCTION

VCR Comercio y Construcciones S.L. is a member of the VCR Group, specializing in the export of premium frozen chicken products from Brazil, delivering consistent quality and reliable supply to international markets.

Our production follows strict sanitary and processing standards, ensuring products that meet global import requirements.

With flexible packaging and efficient logistics, we are ready to support our partners in building long-term business.



VCR COMERCIO Y CONSTRUCCIONES S.L.

ADVANTAGES

Premium Sourcing

We work with trusted Brazilian producers to ensure high-quality frozen chicken products.

Strict Quality Control

Our production follows rigorous sanitary and processing standards, meeting international import requirements.

Flexible Packaging Solutions

We offer customized packaging to meet different market and client needs.

Efficient Logistics

With reliable shipping and cold chain management, we ensure timely and secure delivery.

Stable Supply Capacity

We maintain consistent supply to support long-term business relationships.

International Trade Experience

We understand global market requirements and provide professional export support.

ORIGEN BRAZIL

Premium frozen chicken products from Brazil, processed under strict quality control systems to meet the requirements of international buyers

QUALITY AND EXPORT FOCUS

Processed under strict sanitary and export standards, ensuring consistency and reliability.

PRODUCT INDEX

Our frozen chicken product range includes the following items:

- Chicken Feet
- Chicken Paws
- Chicken Wings Three joint Wings
- Chicken Wings Chicken Middle Joint Wings
- Chicken Wings Tips
- Whole Chicken Legs
- Chicken Legs Boneless Skin On
- Chicken Drumsticks
- Chicken Knee Cartilage
- Chicken Gizzards
- Chicken Liver
- Chicken Breast Skinless, Boneless, cut in halves salted
- Whole Chicken



PRODUCTS

Chicken Feet



SPECIFICATIONS

- *Outer yellow skin off
 - *Well cleaned and fresh
 - *No Bruises
 - *NO black pads or ammonia burns
 - *No bad smells
 - *No feathers
 - *No black pad
 - *Broken bones less than 1%
 - *No excessive blood or blood stains
 - *Moisture content is less than 3%
- Average weight : 35 grams up per unit
Lenght per pice of 9-12cm

PACKING

BOX of 20kgs of weight , which contains four blocks of 5 kgs each one in ballad in polyetheylene bags

The size will be 35 x 50x 19 cm for the frozen paws

1350 Boxes loaded by 40 Foot refrigerated container (FCL) wian an average weight of 27MT (Metric Tons) (+/- 3%) (FCL)

PRODUCTS

Chicken Paws



SPECIFICATIONS

- *Outer yellow skin off
 - *Well cleaned and fresh
 - *No Bruises
 - *NO black pads or ammonia burns
 - *No bad smells
 - *No feathers
 - *No black pad
 - *Broken bones less than 1%
 - *No excessive blood or blood stains
 - *Moisture content is less than 3%
- Average weight : 35 grams up per unit
Lenght per pice of 9-12cm

PACKING

BOX of 20kgs of weight , which contains four blocks of 5 kgs each one in ballad in polyetheylene bags

The size will be 35 x 50x 19 cm for the frozen paws

1350 Boxes loaded by 40 Foot refrigerated container (FCL) wian an average weight of 27MT (Metric Tons) (+/- 3%) (FCL)



BRAZIL - PORTUGAL - SPAIN
VCR Group

VCR COMERCIO Y
CONSTRUCCIONES S.L.

VCR COMERCIO Y CONSTRUCCIONES S.L.

PRODUCTS

Chicken Wing

Three joint
Wings



SPECIFICATIONS

*Outer yellow skin off

- Type: Whole Chicken Wings (3 Joint)
- Weight: 80–120g / piece (you can adjust if supplier gives exact)
- Processing: Cleaned, well processed
- Skin: Intact, no damage
- Color: Natural white to light yellow
- Broken bones: <2%
- Feathers: No visible feathers
- Foreign matter: None
- Moisture: <3%

PACKING

Packaging

- 15 kg or 20 kg carton
- Inner packing: polyethylene bag
- Packaging can be adjusted according to buyer requirements

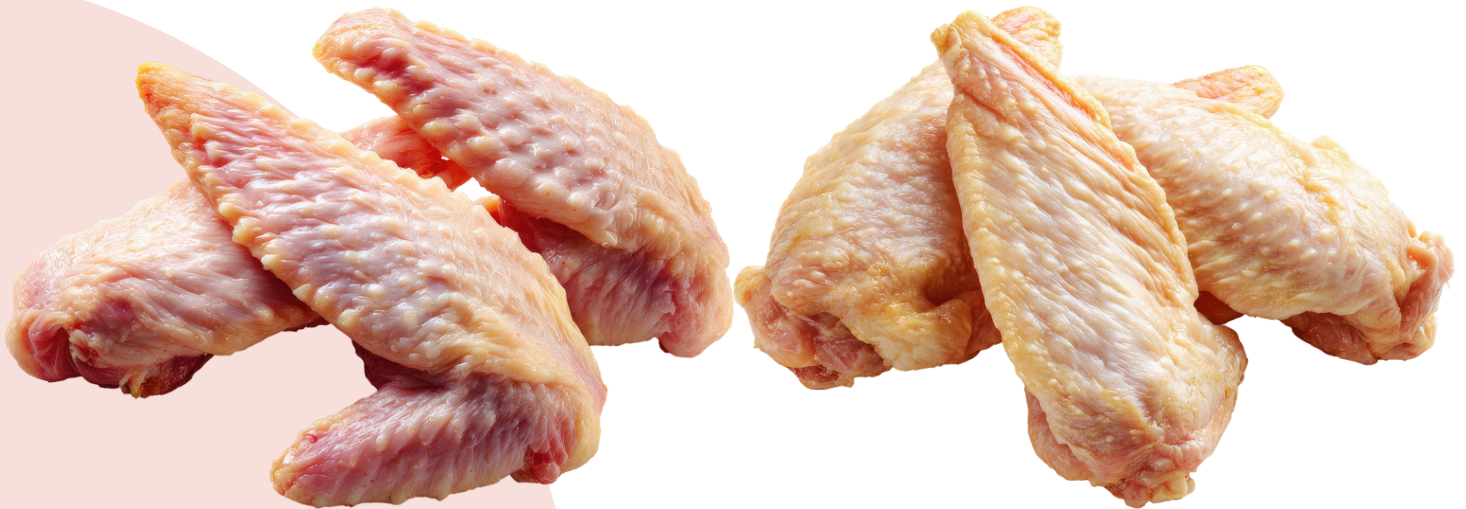
Loading Capacity

- Approx. 26–28 MT per 40ft refrigerated container (FCL)

PRODUCTS

Chicken Wing

Chicken Middle Joint Wings



SPECIFICATIONS

- *Outer yellow skin offType: Chicken Wings – Mid Joint (Wingettes)
- Weight: 30–60g / piece (standard export range)
- Processing: Cleaned, well processed
- Skin: Intact, no damage
- Color: Natural white to light yellow
- Broken bones: <2%
- Feathers: No visible feathers
- Foreign matter: None
- Moisture: <3%

PACKING

Packaging

- 15 kg or 20 kg carton
- Inner packing: polyethylene bag
- Packaging can be adjusted according to buyer requirements

Loading Capacity

- Approx. 26–28 MT per 40ft refrigerated container (FCL)

PRODUCTS

Chicken Wings Tips



SPECIFICATIONS

- Type: Chicken Wing Tips
- Weight: 15–30g / piece (standard range)
- Processing: Cleaned, well processed
- Skin: Intact
- Color: Natural white to light yellow
- Broken bones: <2%
- Feathers: No visible feathers
- Foreign matter: None
- Moisture: <3%
-

PACKING

Packaging

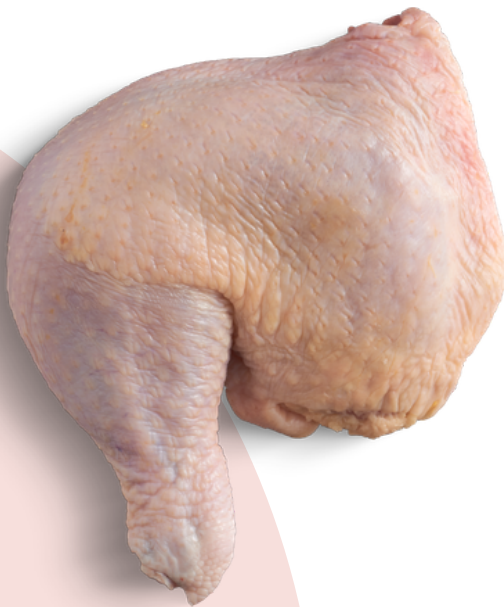
- 15 kg or 20 kg carton
- Inner packing: polyethylene bag
- Packaging can be adjusted according to buyer requirements

Loading Capacity

- Approx. 26–28 MT per 40ft refrigerated container (FCL)

PRODUCTS

Whole Chicken Legs



SPECIFICATIONS

- Type: Whole Chicken Legs (Thigh + Drumstick)
- Weight: 200–350g / piece (standard export range)
- Processing: Cleaned, well processed
- Skin: Intact, no damage
- Color: Natural white to light yellow
- Broken bones: <2%
- Feathers: No visible feathers
- Foreign matter: None
- Moisture: <3%

PACKING

Packaging

- 15 kg or 20 kg carton
- Inner packing: polyethylene bag
- Packaging can be adjusted according to buyer requirements

Loading Capacity

- Approx. 26–28 MT per 40ft refrigerated container (FCL)

PRODUCTS

Chicken Legs

Boneless Skin
On



SPECIFICATIONS

- Type: Boneless Chicken Legs (Skin On)
- Cut: Thigh + drumstick, deboned
- Weight: 150–250g / piece (can vary by trimming)
- Processing: Deboned, cleaned, well processed
- Skin: Intact, natural
- Color: Natural white to light yellow
- Bone content: Boneless
- Cartilage fragments: None
- Foreign matter: None
- Moisture: <3%

PACKING

Packaging

- 15 kg or 20 kg carton
- Inner packing: polyethylene bag
- Packaging can be adjusted according to buyer requirements

Loading Capacity

- Approx. 26–28 MT per 40ft refrigerated container (FCL)

PRODUCTS

Chicken

Drumsticks



SPECIFICATIONS

- Type: Chicken Drumsticks
- Weight: 90–150g / piece (standard export range)
- Processing: Cleaned, well processed
- Skin: Intact, no damage
- Color: Natural white to light yellow
- Broken bones: <2%
- Feathers: No visible feathers
- Foreign matter: None
- Moisture: <3%

PACKING

Packaging

- 15 kg or 20 kg carton
- Inner packing: polyethylene bag
- Packaging can be adjusted according to buyer requirements

Loading Capacity

- Approx. 26–28 MT per 40ft refrigerated container (FCL)

PRODUCTS

Chicken

Knee Cartilage



SPECIFICATIONS

- Type: Chicken Knee Cartilage
- Source: Extracted from chicken leg joints
- Processing: Cleaned, trimmed, well processed
- Appearance: White to light yellow, firm texture
- Bone fragments: Minimal / none
- Foreign matter: None
- Odor: Fresh, typical of chicken product
- Moisture: <3%

PACKING

Packaging

- 15 kg or 20 kg carton
- Inner packing: polyethylene bag
- Packaging can be adjusted according to buyer requirements

Loading Capacity

- Approx. 26–28 MT per 40ft refrigerated container (FCL)

PRODUCTS

Chicken

Gizzards



SPECIFICATIONS

- Type: Chicken Gizzards
- Processing: Cleaned, inner lining removed, well processed
- Appearance: Whole, firm texture
- Color: Dark red to reddish brown
- Odor: Fresh, typical of chicken product
- Foreign matter: None
- Fat content: Minimal
- Moisture: <3%

PACKING

Packaging

- 15 kg or 20 kg carton
- Inner packing: polyethylene bag
- Packaging can be adjusted according to buyer requirements

Loading Capacity

- Approx. 26–28 MT per 40ft refrigerated container (FCL)

PRODUCTS

Chicken

Liver



SPECIFICATIONS

- Type: Chicken Liver
- Processing: Cleaned, well processed
- Appearance: Whole lobes, smooth texture
- Color: Dark red to reddish brown
- Odor: Fresh, typical of chicken product
- Blood clots: Minimal
- Foreign matter: None
- Moisture: <3%

PACKING

Packaging

- 15 kg or 20 kg carton
- Inner packing: polyethylene bag
- Packaging can be adjusted according to buyer requirements

Loading Capacity

- Approx. 26–28 MT per 40ft refrigerated container (FCL)

PRODUCTS

Chicken

Breast Skinless,
Boneless,



SPECIFICATIONS

- Type: Chicken Breast – Skinless, Boneless
- Cut: Single or double lobe (fillet)
- Weight: 120–250g / piece (can vary depending on trimming)
- Processing: Deboned, skin removed, well trimmed
- Appearance: Clean, firm texture
- Color: Light pink to natural pale color
- Bone content: Boneless
- Cartilage fragments: None
- Foreign matter: None
- Moisture: <3%

PACKING

Packaging

- 15 kg or 20 kg carton
- Inner packing: polyethylene bag
- Packaging can be adjusted according to buyer requirements

Loading Capacity

- Approx. 26–28 MT per 40ft refrigerated container (FCL)

PRODUCTS

Whole Chicken



SPECIFICATIONS

- Type: Whole Chicken (Frozen)
- Weight: 800g – 1,200g / 1,200g – 1,500g / 1,500g+ (you can list ranges like this)
- Processing: Fully dressed, cleaned, eviscerated
- Head: Removed
- Feet: Removed
- Skin: Intact, no damage
- Color: Natural white to light yellow
- Broken bones: <2%
- Foreign matter: None
- Moisture: <3%

PACKING

Packaging

- 15 kg or 20 kg carton
- Inner packing: polyethylene bag
- Packaging can be adjusted according to buyer requirements

Loading Capacity

- Approx. 26–28 MT per 40ft refrigerated container (FCL)

PACKING AND LOGISTICS

PACKING

PACKING

- Standard export cartons: 10 kg / 15 kg / 20 kg
- Inner packing: polyethylene bags
- Block or bulk packing available depending on product
- Packaging can be customized according to buyer requirements

STORAGE CONTIDIONS

- Storage temperature: -18°C or below
- Maintained under strict cold chain conditions

SHELF LIFE

- 24 months from production date

SHELF LIFE

- 40ft refrigerated container: approx. 26–28 MT
- Shipment type: FCL (Full Container Load)

SHIPPING

- Transported in refrigerated containers
- Port of loading: Brazil
- Flexible shipping arrangements based on buyer requirements

- All products are handled and transported under strict cold chain conditions to ensure quality and safety upon arrival.



QUALITY & CERTIFICATIONS

- Our products are processed in facilities that comply with international food safety and quality standards.
- The production and export processes follow strict sanitary controls to ensure product safety, consistency, and compliance with importing country requirements.
- Produced under HACCP food safety system
- Processed in ISO-compliant facilities
- Halal certified production available (if required)
- Compliant with international export and sanitary regulations

CERTIFICATIONS



GACC
海关总署



VCR COMERCIO Y CONSTRUCCIONES S.L.

CUSTOMER SERVICE



CONTACT US

AGENT NAME

POSITION



 WhatsApp

1

Eng . VICTOR C ROJAS

CEO

victor.ceo@vcrconstrucoes.com +55 1199413-4475

2

LUIS KWONG

COMMERCIAL
DIRECTOR

luiskwong@gmail.com

+593 96 762 3833